

Flying Start for kids

Information Session for
Preschool Plus Partner Services



Government of
South Australia

Acknowledgement of Country

From the heart:

We acknowledge the Aboriginal peoples as the First peoples of South Australia and as custodians of the lands, waters, skies and communities where we live, learn and raise children.

We recognise Aboriginal peoples as having the longest living culture, raising children safe and strong in their Identity, Community, Culture, and connection to Country.

We pay our deep respects to Elders past and present, and their role as the first knowledge sharers for children. We follow in their footsteps.

Aboriginal peoples, working with and for children, are central in shaping our work. Their wisdom, advice, and guidance enriches our practices, creating a more inclusive and culturally safe environment for children and families.

We respect Aboriginal peoples' ways of being, doing and wise practices guiding our continual learning.

Together we walk and build stronger, more supportive communities for all children.



Child safety and the OECD

The OECD views child safety as high priority and:

- will only partner with providers who will uphold our quality standards.
- will routinely monitor compliance with the core partnership requirements, including working closely with the Education Standards Board on administering the policy.
- is actively working with the federal government and other governments to strengthen the safety and quality of early childhood services, including through significant and urgent reform.



Leading the way for positive change

Preschool Plus is vital in delivering targeted early intervention and learning support to children who have the most to gain. It is about more than just a preschool place: it is about quality, tailored support for every eligible child and their family.

Preschool Plus partner services and referring agencies play a pivotal role in helping drive meaningful change in our communities. The OECD will work closely with Preschool Plus partner services to successfully deliver the program.





By the end of today's session you should:

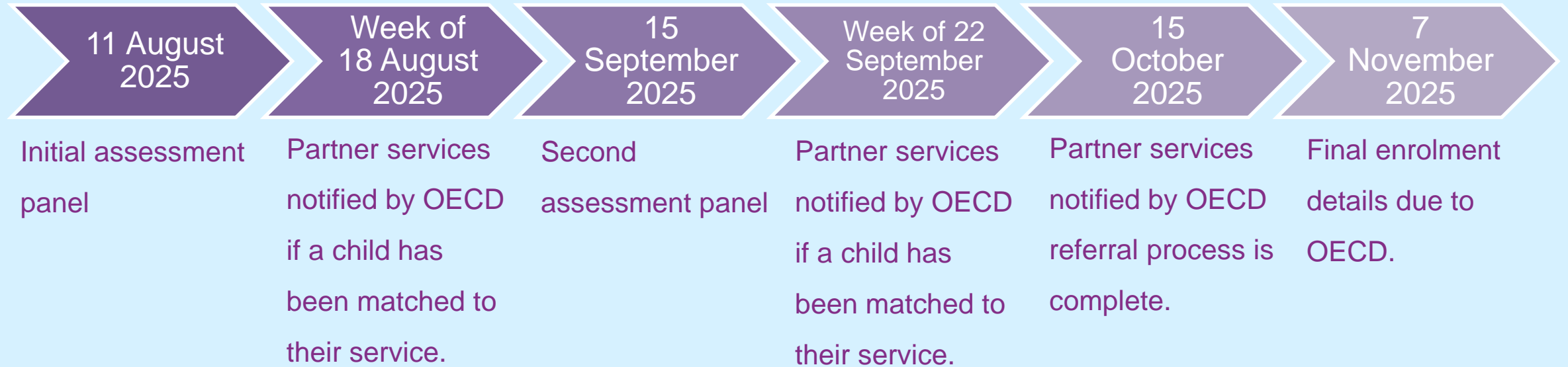
- Understand how the **referral process** for the Preschool Plus program will function and how offers will be made to families
- Understand the **role of referring practitioners** in supporting families and Preschool Plus partner services
- Understand the requirements and **role of Flying Start preschool partners offering Preschool Plus**
- Know where to find **resources and further support**





How children will be identified and selected for Preschool Plus:

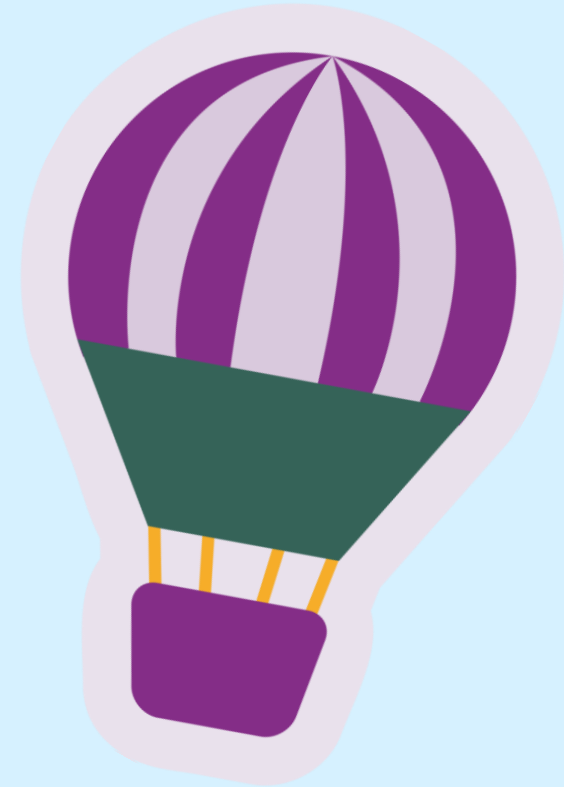
Partner services work with referring practitioners and families.



Practitioners will support successful engagement with families

DHS and DCP practitioners will:

- **Share information** about the Preschool Plus offer with families
- Share details about their matched **Preschool Plus service**
- **Work with your service/s** to support successful enrolment
- With consent, share information about family circumstances with the partner service to **support successful family engagement**
- **Continue to work** with your service/s to support family with participation or attendance



Partner services supporting matched Preschool Plus places



- Assist families to understand Preschool Plus fee relief, their eligibility and any potential out-of-pocket costs.
- Support families with their acceptance of Preschool Plus places and enrolment including, declaration and consent (with practitioner support).
- Email the signed declaration and consent forms to OECD, originals are to be retained at the service.
- Support families to address barriers to attendance through Preschool Plus Outreach.
- Support families to feel welcomed and prepared for first day of Preschool Plus.
- Connect with the referring agency for additional family support.



How to access funding and resources available to Preschool Plus partner services



**Final Preschool Plus enrolment details for 2026 provided to the OECD by
7 November 2025**

- OECD data collection processes will have a flag for services to identify Preschool Plus enrolments.
- This will automatically attract the correct funding rates and funds will be received as outlined in the Policy and Funding Guide.



Preschool Plus Fee Relief for Families

Preschool Plus fee relief is designed to support affordability and access to eligible families with reducing out-of-pocket costs, when their child is enrolled in the Preschool Plus program in a long day care service.

Preschool Plus children may be eligible for fee relief if:

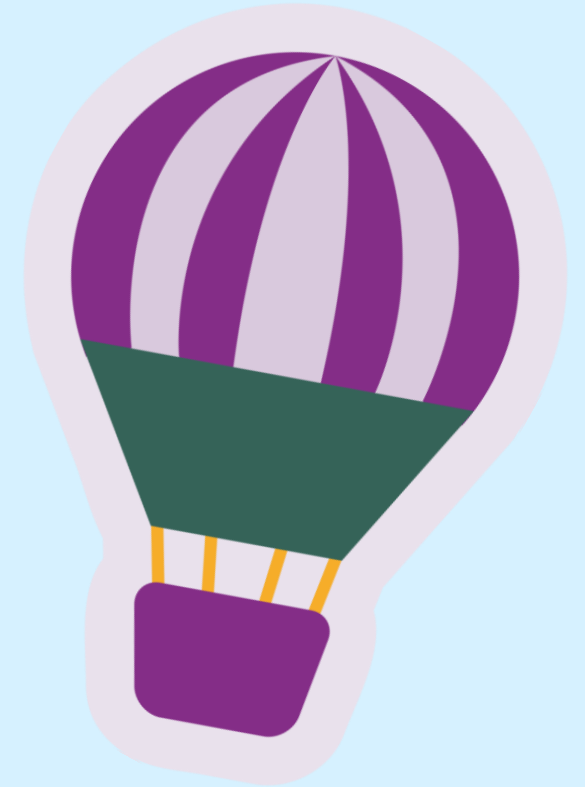
- the gross family annual income is below \$133,280 (amount subject to indexation) i.e. 80% CCS subsidy rate
- they are eligible for the Child Care Subsidy (CCS)
- their out-of-pocket costs are not already covered by the Additional Child Care Subsidy (ACCS) or other funding; and
- they maintain eligibility for the Preschool Plus program



Preschool Plus fee relief calculator

The OECD has developed a fee relief calculator and guidance document to support partner providers and their services to calculate the total **Preschool Plus fee relief amount families are eligible for.**

- The calculator is designed to support conversations with referring agencies and families, by estimating the indicative out-of-pocket costs payable for each eligible Preschool Plus enrolment.
- The checklist will ensure that services have all necessary information prior to having conversations with families.
- The calculator and checklist will be **distributed to relevant services following this session** so that they can utilise these tools to inform their discussions with potential families who have been referred into the Preschool Plus program.
- These tools are for the use of referring agencies and services only and are not for distribution.



Information required

Service-level information:

- Daily rate charged by your service; and
- Hours charged in total per day (i.e. session hours).

Child-level information:

- Whether the child's family has access to the Child Care Subsidy (CCS) or Additional Child Care Subsidy (ACCS)
- Whether the family has exceeded the CCS allowable absences (if known)
- The hours of CCS the family can access each fortnight; and
- The family's estimated annual income and/or CCS level.

Preschool Plus Fee Relief Calculator - Individual child: (i

Please enter the details below for each child for whom you are seeking to calculate a Preschool Plus fee relief paym

Field descriptors:

You are encouraged to first consider a child's likely eligibility via the flow diagram: [here](#)

User manual entry
User selection from drop down box
Calculation

Characteristics of the child and family:

Has this child been referred into the Preschool Plus program?

Yes

Does this child's family have access to the Australian Government Child Care Subsidy?

Yes

Has this family exceeded the CCS allowable absences?

No

How many hours of Australian Government Child Care Subsidy can this family access each fortnight?

72

In family situations where there are two parents, please use the activity level of the parent with the lower amount of recognised activity under the Commonwealth Government's rules.





Preschool Plus Outreach funding to support program participation

Funding can be **used in flexible ways to support attendance and build engagement with families**, depending on their individual needs.

Partner services offering Preschool Plus will:

- receive \$1,700 per Preschool Plus enrolment
- receive information about each child's family situation from their referring agencies.
- decide how best to use their Outreach funding to support program participation in consultation with the family, in line with spending rules outlined in the Policy and Funding Guide.



More funding for teaching and learning

per Preschool Plus enrolment

- Double the universal preschool, teaching and learning allocation at SEIFA 1 rate totalling \$5,200*.

Enhanced Preschool Boost funding

per Preschool Plus enrolment

- \$1,730* (double the universal Preschool Boost allocation per enrolment at the SEIFA 1 rate of \$865*) to secure extra supports to address developmental needs.



Core training

- ALL partner services are required to complete core training in Aboriginal Cultural Safety and Trauma-informed Practice.
- The foundational level of Trauma-informed Practice builds shared understanding and practical strategies to support children who have experienced stress or trauma.
- The foundation level of training in the Cultural Safety framework is 'Knowing'. It focuses on building knowledge and understanding at a foundational level.
- Training will be available online and in person from March 2026



Coaching and support in Trauma-informed practice

In addition, a **new coaching program** is in development to support the implementation of trauma-informed practice across services. It is designed to:

- Support whole-of-service change
- Help educators apply trauma-informed strategies in everyday practice

To access the **free trauma-informed practice coaching program**, partner services must:

- Have confirmed Preschool Plus enrolments
- Ensure all ECTs and educators working in funded preschool room/s and other staff in direct contact with families in these rooms, such as administration staff have completed the online foundational training modules





Any questions?



Next steps

- **11 August** – first assessment panel (complete)
- **Week of 18 August** – partner services notified by OECD if a child has been matched
- **18 August – 31 October** – work with referring practitioners and families.
- **15 September** – second assessment panel
- **15 October** – services notified of end of referral process
- **7 November** – return any outstanding Preschool Plus Acceptance, declaration and consent forms to OECD
- **November 2025** – all partner services to submit Term 1 projected enrolments data to OECD.





Local Teams

are here to help

Your OECD Local Teams are available to provide you with further support or to answer questions as you begin to work with families.

Questions may also be directed to:

oecd.preschoolplus@sa.gov.au.

Additional resources

- Preschool Plus factsheet
- Outreach factsheet
- Appendix 4: [Policy & Funding Guide](#)

