

Flying Start for kids

Preschool Delivery Approaches



Government of
South Australia

Acknowledgement of Country

From the heart:

We acknowledge the Aboriginal peoples as the First peoples of South Australia and as custodians of the lands, waters, skies and communities where we live, learn and raise children.

We recognise Aboriginal peoples as having the longest living culture, raising children safe and strong in their Identity, Community, Culture, and connection to Country.

We pay our deep respects to Elders past and present, and their role as the first knowledge sharers for children. We follow in their footsteps.

Aboriginal peoples, working with and for children, are central in shaping our work. Their wisdom, advice, and guidance enriches our practices, creating a more inclusive and culturally safe environment for children and families.

We respect Aboriginal peoples' ways of being, doing and wise practices guiding our continual learning.

Together we walk and build stronger, more supportive communities for all children.



By the end of today's session



You should understand:

- Requirements for 3-and 4-year-old preschool program hours of delivery
- Submission of projected enrolment data due 7 November 2025 (via iApply)

This is focused on universal delivery, excluding Preschool Plus enrolments.



Preschool Delivery Hours – What we have heard



- During engagements with partnering services, Local Teams identified that some services are unsure and/or have had specific questions regarding the days and hours they will deliver 3-and 4-year-old preschool.
- Some service leaders have expressed challenges in balancing the delivery of preschool hours with scheduling non-contact time for Early Childhood Teachers.
- Networking opportunities have been valuable for partnering services to share examples of where they have used strategies to ensure preschool delivery is flexible and as accessible as possible to suit the needs of the children and families.

Recap - Hours of delivery for 3-year-old preschool



By 2032, the standard offer will be 15 hours, however during roll-out, whilst building up workforce and infrastructure capacity, services may offer between 6 and 15 hours per enrolment per week to maximise the number of children able to receive a 3-year-old preschool program.

Each eligible child can be enrolled for a funded 3-year-old preschool program between 6 to 15 hours per week. The Partner Service will be funded pro-rata on that basis.

Per funded 3-year-old preschool program enrolment, for each child the:

- **minimum** hours per week is 6 hours
- **maximum** hours per week is 15 hours
- **maximum** hours offered per day is 8 hours
- **maximum** number of weeks of attendance is 48 weeks per year
- **maximum** number of hours per year is 600 hours.

Partner services may be funded in the following pro-rata increments, per 3-year-old child, per week.

- 6 hours
- 7.5 hours
- 8 hours
- 10 hours
- 12 hours
- 12.5 hours
- 15 hours.

If a service is offering different hours, they should round down to the lower of the 2 points – such as, 8.5 hours to 8 hours, 11 hours to 10 hours.

Hours of delivery – 4-year-old preschool



Partner Services must offer 15 hours per enrolment per week, or 600 hours per year, for children enrolled in a 4-year-old preschool program.

The Partner Service will be funded pro-rata for each funded preschool program enrolment, up to a:

- **maximum** hours per week is 15
- **maximum** hours offered per day is 8 hours
- **maximum** number of hours per year is 600 hours.



Example scenarios for preschool delivery hours



Partner Service

- The service has 1 x ECT that works 5 days per week, 7.5 hours per day.
- The service will offer 4 days per week, 7.5 hours per day of funded preschool hours (Mon / Tues / Thurs / Fri)
- The ECT will have their non-contact planning time Wednesdays when the funded preschool hours are not being offered. (They are only offering 4 days as they have no second ECT to backfill programming time).
- When a second ECT is onboarded, the service intends to offer the program 5 days per week, 7.5 hours per day to ensure the programs full accessibility for the 3-year-olds in the service.

Alignment with Partnership Requirements:

- Service has ensured a qualified ECT will deliver the preschool program for the full program hours.
- The ECT will have non-contact time on a Wednesday (*4 hours minimum*).
- Children that only attend the service on Wednesdays will not be enrolled in the program as there will not be an ECT to deliver the program on this day at this stage.

Example scenarios for preschool delivery hours



Partner Service

- The service employs 2 x ECTs working 5 days per week:
 - One in the 3-year-old room (30 hours/week, Mon–Thurs); and
 - One in the 4-year-old room (37.5 hours/week, Mon–Fri).
- The preschool program will run 7.5 hours per day, Monday to Thursday.
- To maintain full delivery while providing non-contact time for the 4-year-old room ECT, the Educational Leader with ECT SAT will step in to cover the ECT's non-contact time. This ensures uninterrupted preschool delivery.
- The 3-year-old room ECT uses Fridays for non-contact time, with no impact on program delivery.

Alignment with Partnership Requirements:

- Service has ensured a qualified ECT will deliver the preschool program for the full program hours in both the 3- and 4-year-old rooms.
- Using this strategy, preschool delivery will not be affected by non-contact time and ECTs will have access to their 4-hour minimum non-contact time.
- The educator with ECT SAT is mentored by the fully qualified ECTs at the service while supporting delivery of the program as they cover the non-contact time.



Discussion



- Are there any other examples of preschool delivery that has worked well for your service/s?
- Do you have any questions on preschool delivery in relation to balancing funded preschool hours, partnership requirements, and family and operational needs regarding your service/s?



Reminder

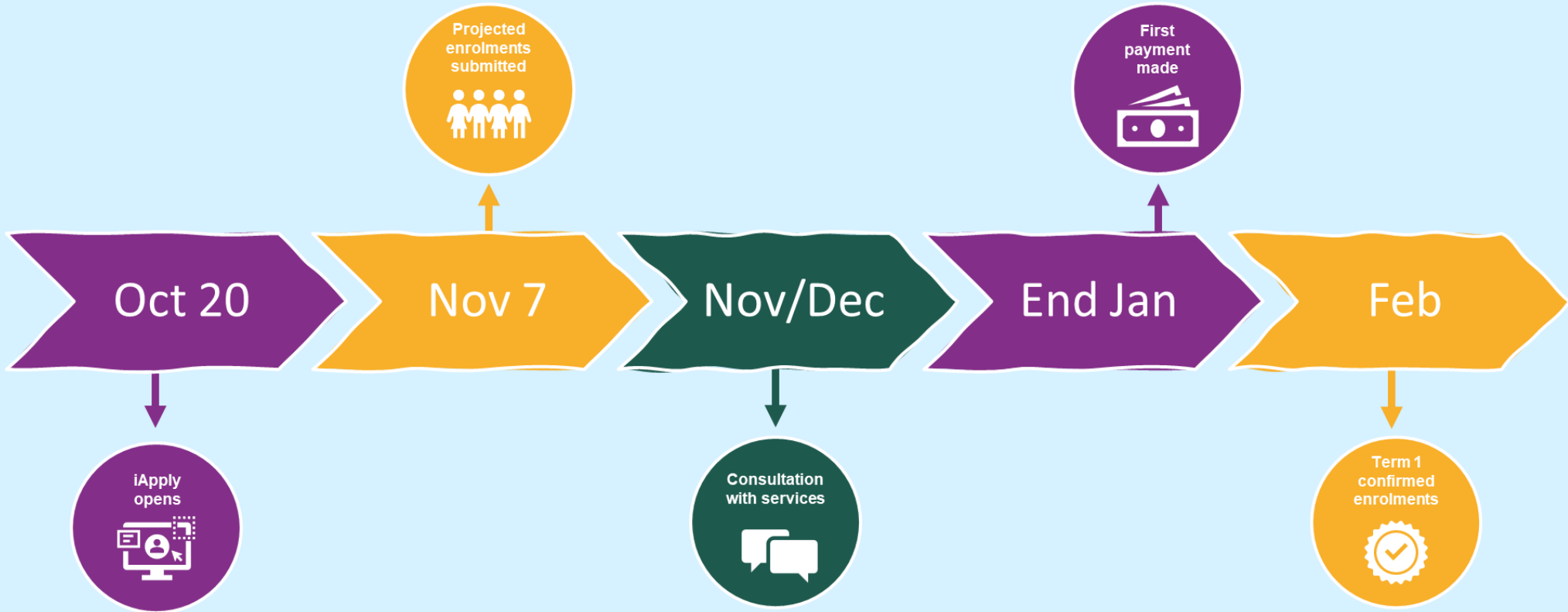


- iApply is now **open** for Partner services to submit their projected enrolment data to OECD by **COB 7 November 2025**.
- **Submitted projected enrolment data is required to receive your January payment.**
- All Partner Services will have received the iApply link and the step-by-step guide on Monday 20 October.
- This is projected enrolment data for **Term 1 2026 only**.

	FREE TEXT FIELD	FREE TEXT FIELD	FREE TEXT FIELD	DROP DOWN BOX	FREE TEXT FIELD	FREE TEXT FIELD	DROP DOWN BOX	DROP DOWN BOX	DROP DOWN BOX	FREE TEXT FIELD	DROP DOWN BOX	FREE TEXT FIELD	DROP DOWN BOX
Entry	First Name(s)	Last Name(s)	Date of birth	Gender	Street Number	Street Name	Street Type	Suburb	State	Postcode	Preschool Program enrolment start date - Term	Hours per week enrolled in the Preschool Program	Intended School Start Date
e.g	Jane	Smith	31/01/2023	Female	1	Smith	Street	Adelaide	SA	5000	Term 1 2026	15	Term 1 2028
1													
2													
3													
4													
5													
6													
7													
8													
9													
10													



Timelines



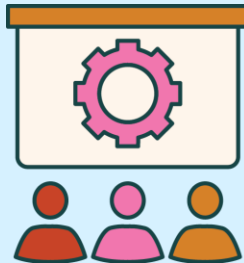


E-Bulletin and Partner webpage (coming soon)

We're developing a streamlined approach that delivers the right information at the right time to services, through a:



Fortnightly digital e-bulletin to your inbox that will summarise key OECD information into one fortnightly email, reducing the need for multiple emails to services.



Password protected partner resource page on the OECD website to centralise all your partnership documents, updates, and tools in one secure location.

Together, these new tools will provide a central, reliable source of clear, concise and timely information, making it easier for services to stay on top of the most important information and actions as needed.

What's next?

- Continue to promote the availability of 3- and 4-year-old preschool to your families and communities.
- Collect 3- and 4-year-old declaration and consent forms for all interested children.
- OECD Local Teams will continue to engage with services regarding service readiness, child eligibility and any other preschool queries.



Connect with us

For more information, please email the Funding and Monitoring team at: OECD.PreschoolFunding@sa.gov.au or visit the website: www.earlychildhood.sa.gov.au

Sign up to the OECD newsletter:



Questions

