

Flying Start for kids

Preschool Boost



Acknowledgement of Country

From the heart:

We acknowledge the Aboriginal peoples as the First peoples of South Australia and as custodians of the lands, waters, skies and communities where we live, learn and raise children.

We recognise Aboriginal peoples as having the longest living culture, raising children safe and strong in their Identity, Community, Culture, and connection to Country.

We pay our deep respects to Elders past and present, and their role as the first knowledge sharers for children. We follow in their footsteps.

Aboriginal peoples, working with and for children, are central in shaping our work. Their wisdom, advice, and guidance enriches our practices, creating a more inclusive and culturally safe environment for children and families.

We respect Aboriginal peoples' ways of being, doing and wise practices guiding our continual learning.

Together we walk and build stronger, more supportive communities for all children.





By the end of today's session

You should know more about:

- The Preschool Boost program and menu
- Planning requirements
- Resources and supports available to you.





What is Preschool Boost?

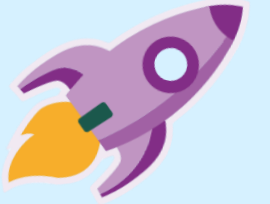
- Preschool Boost is a universal funding program providing extra support for Flying Start partners to boost the development of 3- and 4-year-old children.

Key elements of Preschool Boost include:

- Preschool Boost menu
- Preschool Boost plan
- Core training in Aboriginal Cultural Safety and trauma-informed practice.



Preschool Boost Menu



Preschool Boost Menu

- The Preschool Boost Menu is an online directory for partners to purchase pre-approved, high-quality, evidence-informed supports, suitable for 3- and 4-year-old children, their families and communities.
- It is structured around the Australian Early Development Census (AEDC) domains
- The menu enables partners to search by keywords or filter available supports by AEDC domain, delivery region or mode, support category, program type and cost
- Available supports include allied health services such as occupational therapy and speech pathology, delivered to children in a group setting, as well as educator and leadership training and, family programs.
- All supports listed have been thoroughly quality assured by an expert panel who have backgrounds in early childhood education, allied health, and culturally responsive practice. Services are encouraged to contact their preferred suppliers via the menu to discuss available options, pricing, and suitability.

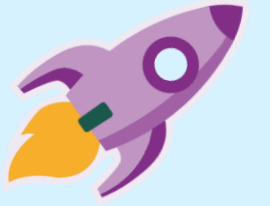
Preschool Boost Plan



- To create the plan:
 - explore your AEDC and other local data and QIP priorities to identify key focus areas.
 - Choose supports from the menu that align to these focus areas
- All partner services are required to submit a Preschool Boost plan tailored to meet the needs of children enrolled in the program and their community.
- Plans must be approved by the service's OECD Local Team before 1 November.
- Once the plan is approved services can book their preferred supports directly using the supplier contact information provided on the Preschool Boost menu.
- Plans can be submitted for approval as soon as they're completed – the earlier they're submitted the sooner services can start booking in supports



Core training



- Services are required to complete core training in Aboriginal Cultural Safety and trauma-informed practice.
- Trauma-informed practice training builds shared understanding and practical strategies to support children who have experienced stress or trauma.
- Training will be available online and in person from March 2026.



Preschool Boost funding



- All Flying Start partners will receive access to Preschool Boost funding, recognising developmental vulnerability exists in every area of South Australia.
- Funding amounts will vary based on the service's socio-economic index, as determined by the Australian Bureau of Statistics (SEIFA 'Socio-Economic Indexes for Areas') coupled with enrolment data.
- Program acquittal and evaluation against the Preschool Boost Plan occurs in November 2026.
- In 2026, services will receive transitional funding. From 2027, program funding will increase as more of these support options become available.
- Funding rates will be published annually and can be found in the Policy and Funding Guide.



Funding arrangements for Department for Education preschools will be confirmed separately.

Preschool Boost spending parameters



Category	Definition/purpose	Allocation
Menu programs/supports	Programs and services listed on the Preschool Boost menu.	At least 50%
Off menu programs/supports	Programs or services that are not listed on the Preschool Boost menu	Up to 20%
Staff backfill	Covers the cost of temporary relief ECTs/staff to cover service staff attending programs or training	Up to 25%
Administration support	Covers costs related to Preschool Boost planning, booking, and administering programs or supports	Up to 5%

- Partner services may pool their funding with other services, provided the arrangement is clearly outlined in their Preschool Boost plan.
- Core training is centrally funded and does not affect a service's individual Preschool Boost allocation.
- For full details on spending parameters, refer to the Policy and Funding Guide



Off-menu spending

In 2026, partner services have flexibility to purchase off-menu under the allowable spending parameters.

Off-menu purchases may be approved when:

- a menu supplier is unavailable within the required timeframe, or at capacity
- the service's budget cannot accommodate the menu item, and a cost-effective alternative is found
- the support is not accessible in the region
- the support is only available online, but a face-to-face local is preferred.

Off-menu purchases may also be used to:

- 'top up' access to existing part time allied health professionals at the service
- support local innovation or site-based research projects contributing to the evidence base for inclusion on the Preschool Boost menu
- address exceptional cases with written OECD approval.



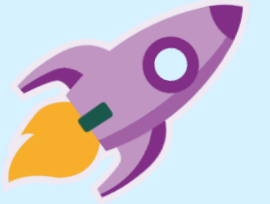
Off-menu spending: regional



- In 2026, additional funding may be available to support services in rural and remote areas, helping to improve equitable access.
- Services can collaborate with their OECD Local Team to determine if this funding is appropriate for their local needs and aligns with available Preschool Boost resources.
- Each request will be assessed individually, taking into account current funding allocations and any service delivery limitations.



What support is available for services?



- The OECD Local Team are available to support services throughout the Preschool Boost planning process. Support may include:
 - helping services to interpret AEDC data and identify children's developmental needs
 - shortlisting and selecting appropriate programs/supports
 - shaping high-quality, outcomes-focused plans
 - reviewing, providing feedback, and approving plans
 - ongoing support, including a mid-year progress check-in.

for any other general enquiries or to provide feedback please contact
OECD.PreschoolBoost@sa.gov.au



Resources



A range of resources are available to support services in completing their Preschool Boost plan.

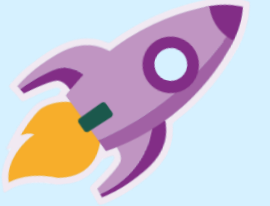
These can be accessed via the OECD website or via your OCED Local Team.

Resources include:

- Fact sheets
- Off-menu process and application forms
- Preschool Boost menu catalogue
- Preschool Boost planning placemat
- AEDC supporting resources.



Preschool Boost funding cycle:



July 2025

Begin Preschool Boost plan development with OECD Local Team

November 2025

1 November: Final deadline to submit completed Preschool Boost plans to OECD Local Teams for approval

January 2026

Quarter 1 payment to services (based on projected enrolments): includes annual Preschool Boost allocation

June/July 2026

Mid-year check in on progress against the plan by OECD Local Team

November 2026

Preschool Boost annual program report and acquittal due

Plans may be submitted for approval anytime between July and November 2025



Next steps: Preschool Boost planning



- Your OECD Local Team will contact your service to schedule a time to begin Preschool Boost planning.
- Read the materials on the Preschool Boost page of the OECD website to build your understanding of the program.
- Reach out to your OECD Local Team or the Preschool Boost team if you have any questions.



Questions



What's next: Flying Start 2026 implementation



- July: Communication and promotion to families about the process to register interest for preschool programs.
- July: Registrations of Interest begins for families to enrol in 3-year-old preschool.
- July: Preschool Boost menu launches and planning commences.
- July: Preschool Plus commissioning process with identified eligible services.
- Term 3: Preschool Toolkit to support professional development being released.



Connect with us:



Email: OECD.PreschoolBoost@sa.gov.au

Website: www.earlychildhood.sa.edu.au

Sign up to the OECD newsletter:

