

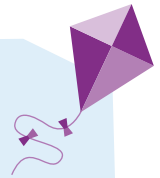
Flying Start for kids

The AEDC and Preschool Boost

What is the AEDC?

The Australian Early Development Census (AEDC) is a nationwide population-level census of early childhood development.

Data is collected during a child's first year at school (reception) based on teacher judgement against the 5 developmental domains.



AEDC domains



Physical health and wellbeing

Children's physical readiness for the school day, physical independence and gross and fine motor skills.



Social competence

Children's overall social competence, responsibility and respect, approach to learning and readiness to explore new things.



Emotional maturity

Children's pro-social and helping behaviours, and absence of anxious and fearful behaviour, aggressive behaviour and hyperactivity and inattention.



Language and cognitive skills (school-based)

Children's basic literacy, interest in literacy, numeracy and memory, advanced literacy and basic numeracy.



Communication skills and general knowledge

Children's communication skills and general knowledge based on broad developmental competencies and skills measured in the school context.

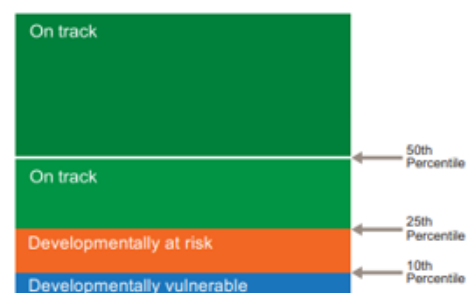
Together, these areas provide a full picture of how children are growing and learning. They also help predict children's future health, learning and wellbeing outcomes.

Each child's development in the five AEDC domains is used to determine if they are 'on track', 'developmentally at risk' or 'developmentally vulnerable'.

The cut-off scores for these were determined in the first AEDC collection in 2009 using the 10th and 25th percentiles. Collections 2012 and onwards have used these scores to determine the three cohorts:

- ▶ **On track:** children are meeting or exceeding the expected developmental milestones for their age.
- ▶ **At risk:** children who may be showing some signs of developmental delay and could benefit from targeted support.
- ▶ **Vulnerable:** children who are more likely to need additional support to thrive in their learning and development.

OFFICIAL



Using AEDC data to support Preschool Boost planning

Using AEDC data:

- ▶ aligns Preschool Boost planning with real, community-based evidence
- ▶ enables services to act intentionally to reduce developmental vulnerabilities
- ▶ strengthens educator capability and inclusive practice
- ▶ contributes to long-term improvements in AEDC results over time.

You can use AEDC data in Preschool Boost planning in the following ways:

- ▶ **Review:** Look at AEDC data, community information, and your service's priorities.
- ▶ **Identify:** Find strengths and developmental vulnerabilities across the AEDC domains.
- ▶ **Plan:** Choose programs and supports on the menu that directly address the focus developmental domains.
- ▶ **Link:** Connect your AEDC data and Preschool Boost plans back to your Quality Improvement Plan (QIP), service plans, and broader goals.
- ▶ **Reflect:** Monitor progress, reflect, adjust, and build on what is working well.

Preschool Boost is designed to improve child development outcomes now and support strategic, community-aligned growth for the future.

Connecting AEDC data to broader long term goals

Using AEDC data helps services see where children in their community need the most support. This supports better planning, helps focus efforts, and builds stronger support for children, not just for the QIP, broader service goals and long-term impact.

AEDC data also helps services plan ahead for children enrolled now and in the future.

By using AEDC data and reflecting regularly, services can:

- ▶ track child development over time
- ▶ monitor progress
- ▶ adjust planning when needed
- ▶ keep building on what is working well.

For more information

Read the [AEDC fact sheet](#) for a useful summary or watch this [Introduction video](#).

Learn more about [the 5 AEDC domains](#) and what it means to be developmentally vulnerable, at risk or on track.

Watch the [Understanding the data](#) video for information about how the data is collected, results measured and reported, and how to consider the results.

Watch the [Informing your planning](#) video to explore how AEDC data can enhance services and supports to improve outcomes for all children.

Read [AEDC Fact Sheet: Identifying and Planning for Children's Development](#) to understand how population data can complement individual data to inform planning for cohort needs.

Visit [AEDC for schools and early childhood services](#) to find out more about using AEDC data from an early childhood service perspective.

[AEDC User Guide: Early Childhood Services and Schools](#) lead services through the steps they might take when thinking about how to respond to AEDC data for their service.

Contact the OECD

Email the Preschool Boost team at oe.cd.preschoolboost@sa.gov.au



Government of
South Australia

OFFICIAL

Flying Start
for kids